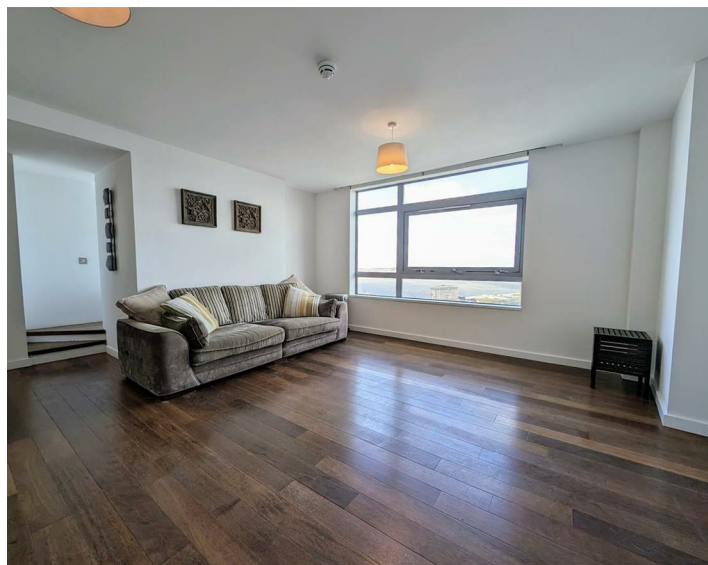




Apt 1805 Beetham Tower, Liverpool, L3 9BD
£900 PCM

www.
cityresidential
.co.uk



About the Property

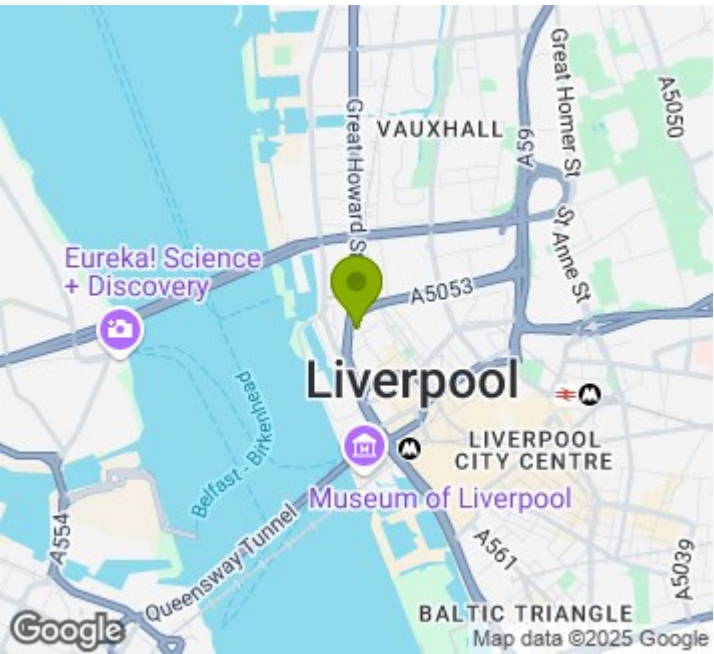
AVAILABLE NOW with breathtaking views out towards the River Mersey and Irish Sea is this beautifully presented one bedroom, 18th floor apartment in the ever popular Beetham Tower on Old Hall Street. This fabulous accommodation which is in immaculate condition throughout, briefly comprises of an entrance hallway, living/dining room, open plan fitted kitchen with integrated appliances, a double bedroom and a main bathroom.

Do not miss the opportunity to rent this fantastic property which would make an ideal home for anyone wanting unrivalled views in a really impressive apartment.

Beetham Tower is serviced by a lift to all floors. There is no parking available with this apartment.

EPC - C
Council Tax Band - C
Deposit Payable £1038.00

Call us now on 0151 231 6100 to secure a viewing.



Energy Efficiency Rating

	Current	Potential
Very energy efficient - lower running costs		
(92 plus) A		86
(81-91) B		
(69-80) C	72	
(55-68) D		
(39-54) E		
(21-38) F		
(1-20) G		
Not energy efficient - higher running costs		
England & Wales	EU Directive 2002/91/EC	



City Residential
81/87 Victoria Street, The Old Haymarket, Liverpool L1 6DG
T: 0151 231 6100 F: 0151 231 6105
E: sales@cityresidential.co.uk



WWW.
cityresidential
.co.uk